

JEITA

Standard of Japan Electronics and Information Technology Industries Association

ED-5002A

**2.5V±0.2V (Normal Range), and 1.8V to 2.7V (Wide Range)
power Supply Voltage and Interface Standard for
Nonterminated Digital Integrated Circuit**

Revised April, 2006

Investigated by

Technical Standardization Committee on Semiconductor Devices

Published by

Japan Electronics and Information Technology Industries Association

This document is a translation without guarantee. In the event of any doubt arising, the original standard in Japanese is to be evidenced.

JEITA standards are established independently to any existing patents on the products, materials or processes they cover.

JEITA assumes absolutely no responsibility toward parties applying these standards or toward patent owners.

© 2006 by the Japan Electronics and Information Technology Industries Association

All rights reserved. No part of this standard may be reproduced in any form or by any means without prior permission in writing from the publisher.

Contents

	page
Foreword	1
1. Scope	1
2. Standard specifications	1
2.1 Absolute maximum continuous ratings	1
2.2 Recommended operating conditions	1
2.3 DC specifications	2
2.4 Optional DC electrical characteristics for Schmitt trigger operation	3
3. Test conditions	3
3.1 Positive Going Threshold Voltage	3
3.2 Negative Going Threshold Voltage	4
Explanation	5

Standard of Japan Electronics and Information Technology Industries Association

2.5V±0.2V (normal range), and 1.8V to 2.7V (wide range) power supply voltage and interface standard for nonterminated digital integrated circuit

Foreword To provide this standard of specifications for uniformity, multiplicity of sources, elimination of confusion, and ease of device specification and design by users.

1. Scope This standard defines power supply voltage ranges, DC interface parameters for a family of nonterminated digital circuits operating from a power supply of 2.5V and driving/driven by parts of the same family, or mixed families which comply with the input/output interface specifications.

The specifications in this standard represent a minimum set or "base line" set of interfaces for CMOS-compatible circuits.

2. Standard specifications All voltages listed are referenced to ground except where noted.

2.1 Absolute maximum continuous ratings Absolute maximum continuous ratings give in table 1.

Table 1 Absolute maximum continuous ratings ⁽¹⁾

Parameter	Symbol	Test condition	Rating	Unit
Power supply voltage	V _{DD}	–	–0.5 ~ 3.6	V
DC input voltage	V _{IN}	excluding I/O pins	–0.5 ~ V _{DD} +0.5(≤3.6 max)	V
DC output voltage	V _{OUT}	including I/O pins	–0.5 ~ V _{DD} +0.5(≤3.6 max)	V
DC input current	I _{IN}	V _{IN} < 0V or V _{IN} > V _{DD}	±20	mA
DC output current	I _{OUT}	V _{OUT} < 0V or V _{OUT} > V _{DD}	±20	mA
Storage temperature range	T _{STG}	–	⁽²⁾	°C

Note⁽¹⁾: Absolute maximum continuous ratings are those values beyond which damage to the device may occur. Exposure to these conditions or conditions beyond those indicated may adversely affect device reliability. Functional operation under absolute maximum conditions is not implied, if it is beyond recommended operating conditions.

Note ⁽²⁾: Specified by manufacturer for various purposes, respectively.

2.2 Recommended operating conditions

2.2.1 Normal range Normal range of recommended operating conditions give in table 2.

Table 2 Normal range of recommended operating conditions

Parameter	Symbol	Operating range	Unit
Power supply voltage	V _{DD}	2.3 ~ 2.7	V
Operating temperature range	T _a	⁽³⁾	°C

Note⁽³⁾: Specified by manufacturer for various purposes, respectively.

2.2.2 Wide range Wide range of recommended operating conditions give in table 3.

Table 3 Wide range of recommended operating conditions

Parameter	Symbol	Operating range	Unit
Power supply voltage	V_{DD}	1.8 ~ 2.7	V
Operating temperature range	T_a	(⁴)	°C

Note(⁴): Specified by manufacturer for various purposes, respectively.

2.3 DC specifications All voltages listed are referenced to ground except where noted.

2.3.1 Normal range Normal range of DC specifications give in table 4.

Table 4 Normal range of DC specifications

Parameter	Symbol	Test condition	Min	Max	Unit
Power supply voltage	V_{DD}	–	2.3	2.7	V
High-level input voltage	V_{IH}	$V_{OUT} \geq V_{OH} \text{ (min)}$	1.7	$V_{DD} + 0.3$	V
Low-level input voltage	V_{IL}	$V_{OUT} \leq V_{OL} \text{ (max)}$	–0.3	0.7	V
High-level output voltage	V_{OH}	$V_{DD} = \text{min}$ $V_{IN} = V_{IH} \text{ or } V_{IL}$ $I_{OH} = -100\mu\text{A}$	2.1	–	V
		$V_{DD} = \text{min}$ $V_{IN} = V_{IH} \text{ or } V_{IL}$ $I_{OH} = -1\text{mA}$	2.0	–	
		$V_{DD} = \text{min}$ $V_{IN} = V_{IH} \text{ or } V_{IL}$ $I_{OH} = -2\text{mA}$	1.7	–	
Low-level output voltage	V_{OL}	$V_{DD} = \text{min}$ $V_{IN} = V_{IH} \text{ or } V_{IL}$ $I_{OL} = 100\mu\text{A}$	–	0.2	V
		$V_{DD} = \text{min}$ $V_{IN} = V_{IH} \text{ or } V_{IL}$ $I_{OL} = 1\text{mA}$	–	0.4	
		$V_{DD} = \text{min}$ $V_{IN} = V_{IH} \text{ or } V_{IL}$ $I_{OL} = 2\text{mA}$	–	0.7	

2.3.2 Wide range Wide range of DC specifications give in table 5.

Table 5 Wide range of DC specifications

Parameter	Symbol	Test condition	Min	Max	Unit
Power supply voltage	V_{DD}	–	1.8	2.7	V
High-level input voltage	V_{IH}	$V_{OUT} \geq V_{OH} \text{ (min)}$	$0.7 V_{DD}$	$V_{DD} + 0.3$	V
Low-level input voltage	V_{IL}	$V_{OUT} \leq V_{OL} \text{ (max)}$	–0.3	$0.2 V_{DD}$	V
High-level output voltage	V_{OH}	$V_{DD} = \text{min}$ $V_{IN} = V_{IH} \text{ or } V_{IL}$ $I_{OH} = -100\mu\text{A}$	$V_{DD} - 0.2$	–	V
High-level output voltage	V_{OL}	$V_{DD} = \text{min}$ $V_{IN} = V_{IH} \text{ or } V_{IL}$ $I_{OL} = 100\mu\text{A}$	–	0.2	V

2.4 Optional DC electrical characteristics for Schmitt trigger operation All specifications in the following tables apply across the operating temperature range.

2.4.1 Optional Schmitt trigger operation - Normal range Normal range of optional schmitt trigger operation give in table 6.

Table 6 Normal range of optional schmitt trigger operation ⁽⁵⁾(⁶)

Symbol	Parameter	Test Condition	Min	Max	Unit
V_{DD}	Supply Voltage	–	2.3	2.7	V
$V_{t+} (V_p)$	Positive Going Threshold Voltage	$V_{OUT} \geq V_{OH} (min)$	0.9	1.7	V
$V_{t-} (V_n)$	Negative Going Threshold Voltage	$V_{OUT} \leq V_{OL} (max)$	0.7	1.5	V
$V_h (V_t)$	Hysteresis Voltage	$V_{t+} - V_{t-}$	0.2	1.0	V
V_{OH}	Output High Voltage	$I_{OH} = -100\mu A$ $I_{OH} = -1mA$ $I_{OH} = -2mA$	2.1 2.0 1.7	–	V
V_{OL}	Output Low Voltage	$I_{OL} = 100\mu A$ $I_{OL} = 1mA$ $I_{OL} = 2mA$	–	0.2 0.4 0.7	V

Note⁽⁵⁾: V_{DD} of the sending and receiving devices must track within 0.1 V to maintain adequate dc margins.

Note⁽⁶⁾: For $V_{t+} (V_p)$ and $V_{t-} (V_n)$, V_{DD} refers to the receiving device. For V_{OH} and V_{OL} , V_{DD} refers to the sending device.

2.4.2 Optional Schmitt trigger operation – Wide range Wide range of optional schmitt trigger operation give in table 7.

Table 7 Wide range ⁽⁷⁾(⁸)

Symbol	Parameter	Test Condition	Min	Max	Unit
V_{DD}	Supply Voltage	–	1.8	2.7	V
$V_{t+} (V_p)$	Positive Going Threshold Voltage	$V_{OUT} \geq V_{OH} (min)$	$0.25V_{DD}$	$0.75V_{DD}$	V
$V_{t-} (V_n)$	Negative Going Threshold Voltage	$V_{OUT} \leq V_{OL} (max)$	$0.15V_{DD}$	$0.65V_{DD}$	V
$V_h (V_t)$	Hysteresis Voltage	$V_{t+} - V_{t-}$	$0.1V_{DD}$	$0.6V_{DD}$	V
V_{OH}	Output High Voltage	$I_{OH} = -100\mu A$	$V_{DD} - 0.2$	–	V
V_{OL}	Output Low Voltage	$I_{OL} = 100\mu A$	–	0.2	V

Note⁽⁷⁾: V_{DD} of the sending and receiving devices must track within 0.1 V to maintain adequate dc margins.

Note⁽⁸⁾: For $V_{t+} (V_p)$ and $V_{t-} (V_n)$, V_{DD} refers to the receiving device. For V_{OH} and V_{OL} , V_{DD} refers to the sending device.

3. Test conditions

3.1 Positive Going Threshold Voltage [$V_{t+} (V_p)$] Input signal is raised from a grand level in the measurement circuit shown in Figure 1 , and the input voltage value of which output logic changed is determined as $V_{t+} (V_p)$.

3.2 Negative Going Threshold Voltage [$V_{t-} (V_n)$] Input signal is dropped from a power supply voltage level in the measurement circuit shown in Figure 1 , and the input voltage value of which output logic changed is determined as $V_{t-} (V_n)$.

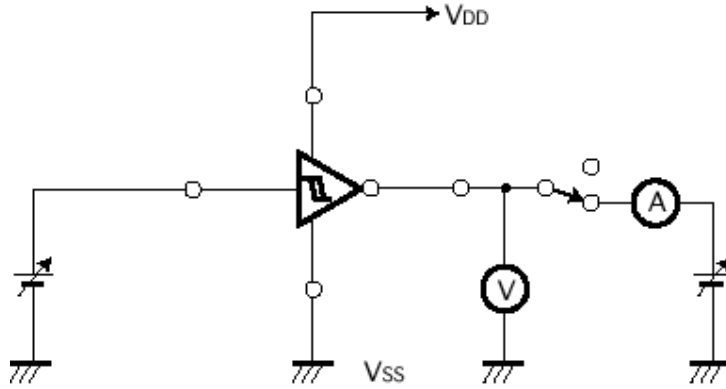


Figure 1 DC characteristic measurement circuit of Schmitt-trigger input

Explanation for 2.5V \pm 0.2V (normal Range), and 1.8V to 2.7V (wide range) Power supply voltage and interface standard for non-terminated digital integrated circuit

This explanation is not part of this JEITA standard. The discussion that follows provides descriptions of items defined or detailed in the standard body or in the Annex as well as other related topics.

1. Purpose of establishment This standard is enacted to accomplish a high speed and a low voltage operation for digital integrated circuits.

This standard defines power supply voltage ranges, DC interface parameters for a family of nonterminated digital circuits operating from a power supply of 2.5V and driving/driven by parts of the same family, or mixed families which comply with the input/output interface specifications.

2. Review of discussion history JEDEC JC-16 (Low Voltage & High Speed Interface Sub-committee), called JEDEC after here, which belongs to EIA (Electronic Industries Association of U.S.A), enacted substantially the standard of power supply voltage for digital circuits in the world.

IC Low Voltage Operation Sub-committee which belongs to EIAJ (Electronic Industries Association of Japan) has been cooperation with JEDEC and communicated mutually, since it was founded in 1992.

A power supply voltage of digital circuits had been kept 5V, actually for a long time from 1980's. But, in 1990's, a requirement of low power supply voltage has become increasing to attain a low power consumption and a high noise immunity of electric equipments, in a main application of portable equipments (note PC, etc) which need a long battery operation and high performance equipments (WS, etc) which require a high speed.

In 1990's, also an age of deep sub-micron process technology (below 0.5 μ m process technology) has begun. Needs of low power supply voltage have become the most important issue to obtain a keeping of reliability and continuities of the trends of high density, high speed, together.

According to above back ground, discussion for standard of low power supply voltage, firstly 3.3V, have begun in JEDEC, from early of 1990's. 3.3V standard (JESD8-A) was enacted in June, 1994, 2.5V standard (JESD8-5) was in October, 1995 and 1.8V standard (JESD8-7) was in February, 1997, respectively.

Especially, 2.5V JEDEC standard (JESD8-5) was composed of a normal range for regulated operation and a wide range for battery operation, supposing an age of 0.25 μ m class IC.

IC Low Voltage Operation Sub-committee began the discussion for standard of low power supply voltage since April, 1996 in EIAJ, according to JEDEC's activities of power supply discussion, in anticipation of a real popularization of 3.3V power supply voltage from the half of 1990's and coming of next lower supply voltage than 3.3V.

EIAJ standard of 2.5V power supply voltage was established in May, 1998. This standard corresponds to that of JEDEC about specifications, because it has been already known and used widely in the world. But, this standard is amended from that of JEDEC about notation and sentence for accomplishing the unify of them among three JEDEC standards (3.3V, 2.5V, 1.8V).

After standardizing the dc standard, discussion on Schmitt trigger input standard was started by JEITA /

ED-5002A

LVSC in February 2003. JEITA/LVSC submitted its proposed Schmitt trigger input standard to JEDEC in March 2004, for the first time. JEDEC's discussion on Schmitt trigger input standard was begun by this proposal. The task-group was organized by JEITA / LVSC and JEDEC at the JEDEC meeting in June 2004. It has decided that the proposal of Schmitt trigger standard to be added into existing dc standard. Finally, the proposal of Schmitt trigger input standard was approved at the JEDEC meeting in December 2004. Based on the result of JEDEC meeting, JEITA's revised standard of 2.5V power supply voltage was revised as ED-5002A in April 2006.

3. Members of discussion This standard has been discussed by the IC Low Voltage Operation Sub-committee which belongs to Group on Integrated Circuits of Technical Standardization Committee on Semiconductor Devices.

The members are shown as following.

< Technical Standardization Committee on Semiconductor Devices >

Chairman	Hisao Kasuga	NEC Electronics Corp.
----------	--------------	-----------------------

< Group on Integrated Circuits >

Chairman	Hisao Kasuga	NEC Electronics Corp.
----------	--------------	-----------------------

< IC Low Voltage Operation Sub-Committee >

Chairman	Haruyoshi Takaoka	Fujitsu Ltd.
Vice-chairman	Kohji Hosokawa	IBM Japan, Ltd.
Member	Masahiro Kurimoto	Oki Electric Industry Co.,Ltd.
	Hidemitsu Baba	SANYO Electric Co.,Ltd.
	Koji Inoue	Sharp Corp.
	Akira Nakada	Seiko Epson Corp.
	Mitsuo Soneta	Sony Corp.
	Masanori Kinugasa	Toshiba Corp.
	Takashi Akioka	Renesas Corp.
	Takefumi Yoshikawa	Matsushita Electric Industrial Co.,Ltd.
	Akitoshi Watanabe	Rohm Co.,Ltd.
	Kazuo Yamaguchi	TOSHIBA LSI System Support Corp.
Guest	Osamu Uno	Fujitsu VLSI Ltd.
	Hideki Sato	JEITA
Secretariat	Koji Kitada	JEITA

ED-5002A

Revised April, 2006

Published by Technical Standardization Center of Japan Electronics &
Information Technology Industries Association

11, Kanda-Surugadai 3-chome, Chiyoda-ku, Tokyo 101-0062, Japan

TEL +81-3-3518-6434 FAX +81-3-3295-8727